



Bollettino Informazione Tecnica / *Technical Information Bulletin*

| | | | | |
|---|-----------------------------------|--------------------|----------------------|-----|
| compilato da / <i>compiled by</i> | approvato da / <i>approved by</i> | data / <i>date</i> | codice / <i>code</i> | TIB |
| Dario Antonino | Antonino Niosi | 12/03/18 | 800000 05 | |
| prodotto / <i>product</i> | | | | |
| Mac Driver 4.0 EU | | | | |
| Sistemi interessati / <i>system concerned</i> | | | | |
| see the products list in description | | | | |
| titolo / <i>subject</i> | | | | |
| "MACPHASE4.0_2018.01.05-OLIVETTI.ZIP" | | | | |

Descrizione/Description

Beginning from March 12th 2017 the new **MAC DRIVER 4.0** library (**MacPhase4.0_2018.01.05-Olivetti.zip**) is present in FTP Tecnico Professional repository on www.olinet.biz.

New Features

Mac driver 4.0 is the newest version of the Mac driver for OLIVETTI printers and MFPs. It provides improved user experience through a number of UI enhancements.

Mac driver 4.0 supports all functionalities provided in previous Mac drivers, plus the extended ability to save and reset common feature settings for specific installed printers.

Data collection is integrated for the purpose of improving the software quality.

Additional printer/MFP models are included in Mac driver 4.0.

| data / date | codice - progr./ code - number | TIB |
|-------------|--------------------------------|-----|
| 12/03/18 | 800000 | 05 |

Supported O.S.

The latest Mac OS Sierra is fully supported by this Mac driver 4.0, but Mac OS X 10.6 and 10.7 support have been dropped.

| O.S. | |
|---------------|---------------|
| OS X 10.8 | Mountain Lion |
| OS X 10.9 | Mavericks |
| OS X 10.10 | Yosemite |
| OS X 10.11 | El Capitan |
| macOS X 10.12 | Sierra |
| macOS X 10.13 | High Sierra |

Concerned Olivetti Product

[MacPhase4.0_2018.01.05-Olivetti.zip](#)

| Device Name | note |
|------------------------------------|------|
| Olivetti Generic Color A3 PCL | |
| Olivetti Generic Color A3 PDF | |
| Olivetti Generic Color A4 PCL | |
| Olivetti Generic Color A4 PDF | |
| Olivetti Generic Monochrome A3 PCL | |
| Olivetti Generic Monochrome A3 PDF | |
| Olivetti Generic Monochrome A4 PCL | |
| Olivetti Generic Monochrome A4 PDF | |
| d-Color MF2001 | |
| d-Color MF2501 | |
| d-Color MF2552 | |
| d-Color MF2552 plus | |
| d-Color MF2553 | |
| d-Color MF2603 | |
| d-Color MF2603en | |
| d-Color MF2603plus | |
| d-Color MF2604 | |
| d-Color MF2604en | |

| | | | |
|-----------------|--------------------------------|-----------|------------|
| data / date | codice - progr./ code - number | | TIB |
| 12/03/18 | 800000 | 05 | |

| Device Name | note |
|--------------------------------|------|
| d-Color MF2604plus | |
| d-Color MF2613 plus | |
| d-Color MF2613en | |
| d-Color MF2614 plus | |
| d-Color MF2614en | |
| d-Color MF2624 | |
| d-Color MF2624 ^{plus} | |
| d-Color MF3003 | |
| d-Color MF3004 | |
| d-Color MF3253 | |
| d-Color MF3503 | |
| d-Color MF3504 | |
| d-Color P2021 | |
| d-Color P2026 | |
| d-Color P2121 | |
| d-Color P2126 | |
| d-Color P2130 | |
| d-Color P221 | |
| d-Color P221special | |
| d-Color P2226 | |
| d-Color P2226 ^{plus} | |
| d-Color P226 | |
| d-Copia 2001 | |
| d-Copia 253MF | |
| d-Copia 253MFplus | |
| d-Copia 255MF | |
| d-Copia 283MF | |
| d-Copia 284MF | |
| d-Copia 3001MF | |
| d-Copia 3003MF | |
| d-Copia 3004MF | |
| d-Copia 3014MF | |
| d-Copia 303MF | |
| d-Copia 303MFP | |
| d-Copia 3500MF | |
| d-Copia 3500MFplus | |
| d-Copia 3502MF | |
| d-Copia 3502MF plus | |
| d-Copia 3503MF | |

| | | | |
|-------------|--------------------------------|----|-----|
| data / date | codice - progr./ code - number | | TIB |
| 12/03/18 | 800000 | 05 | |

| Device Name | note |
|---------------------|------|
| d-Copia 3504MF | |
| d-Copia 3513MF | |
| d-Copia 3514MF | |
| d-Copia 3524MF | |
| d-Copia 3524MFplus | |
| d-Copia 4000MF | |
| d-Copia 4003MF | |
| d-Copia 4003MF plus | |
| d-Copia 4004MF | |
| d-Copia 4004MF plus | |
| d-Copia 4023MF | |
| d-Copia 4024MF | |
| d-Copia 4024MFplus | |
| d-Copia 403MF | |
| d-Copia 403MFen | |
| d-Copia 403MFplus | |
| d-Copia 404MF | |
| d-Copia 404MFen | |
| d-Copia 404MFplus | |
| d-Copia 4200MF | |
| d-Copia 4500MF | |
| d-Copia 4500MFplus | |
| d-Copia 5000MF | |
| d-Copia 5004MF | |
| d-Copia 5200MF | |
| d-Copia 5500MF | |
| d-Copia 5500MFplus | |
| d-Copia 6000MF | |
| d-Copia 6004MF | |
| d-Copia 6500MF | |
| d-Copia 6500MFplus | |
| d-Copia 7001MF | |
| d-Copia 8000MF | |
| d-Copia 8000MFplus | |
| d-Copia 8001MF | |
| d-Copia 3002MF | |
| d-Copia 3002MF plus | |
| d-Copia 3013MF plus | |

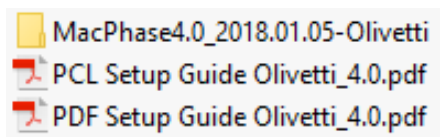
| | | |
|-------------|--------------------------------|-----|
| data / date | codice - progr./ code - number | TIB |
| 12/03/18 | 800000 05 | |

| Device Name | note |
|---------------|------|
| PG L2030 | |
| PG L2035 | |
| PG L2040 | |
| PG L2045 | |
| PG L2130 | |
| PG L2135 | |
| PG L2140 | |
| PG L2145 | |
| PG L2150 | |
| PG L2235 | |
| PG L2335 | |
| PG L2435 | |
| PG L2535 | |
| PG L2540 | |
| PG L2540 plus | |
| PG L2545 | |
| PG L2550 | |
| PG L2555 | |


Installation

You can install the driver using the provided package installer.

Extract the **MacPhase4.0_2018.01.05-Olivetti.zip** file



Open the **MacPhase4.0_2018.01.05-Olivetti** folder

 Olivetti OS X 10.8+ Web build 2018.01.05.dmg 05/01/2018 17:25 File DMG 16.216 KB

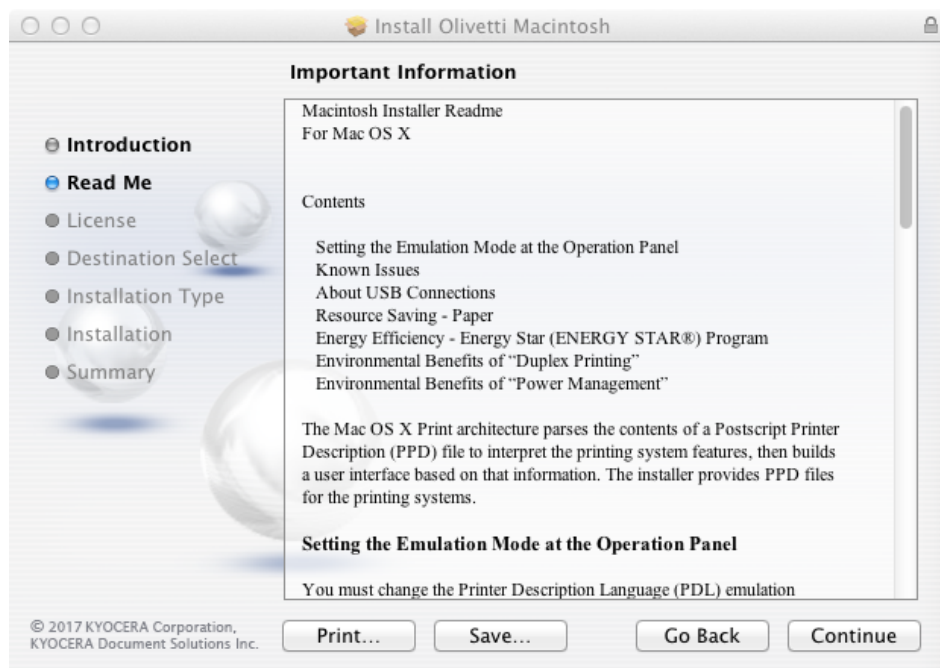
1. Double-click the **Olivetti OS X 10.8+ Web build 2018.01.05.dmg** file to run the installer.

| data / date | codice - progr./ code - number | TIB |
|-------------|--------------------------------|-----|
| 12/03/18 | 800000 | 05 |

2. In the installer dialog, click Continue to proceed to the Readme page.

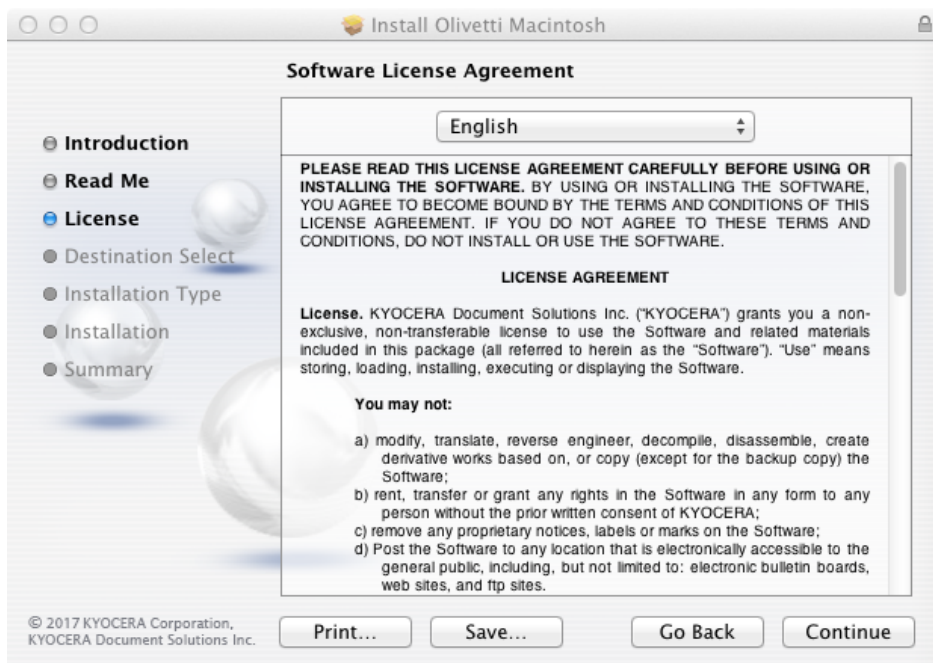


3. Click **Continue** to proceed to the license agreement page.

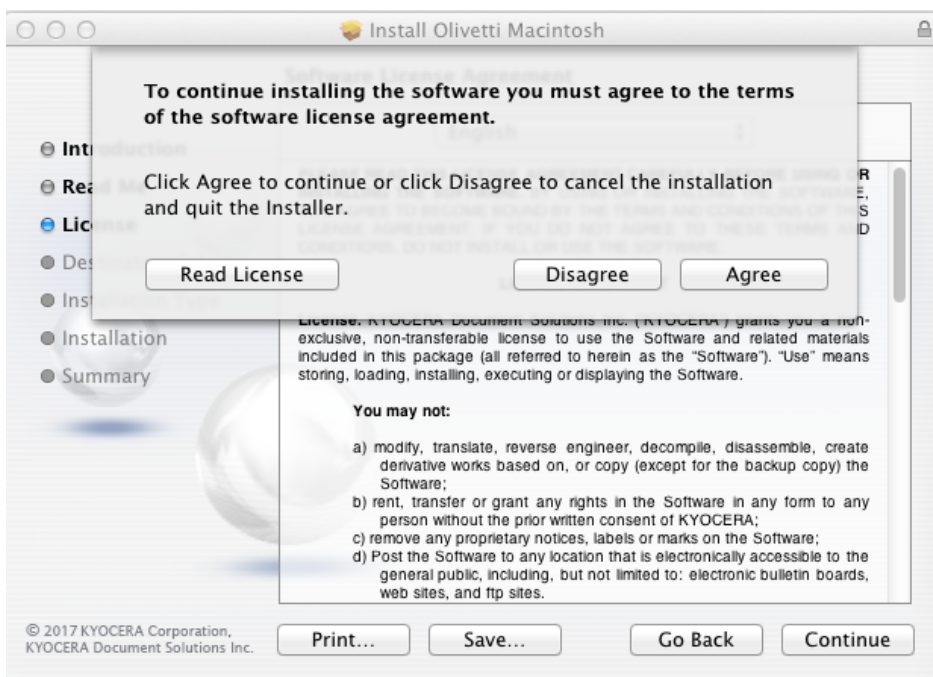


| data / date | codice - progr./ code - number | TIB |
|-------------|--------------------------------|-----|
| 12/03/18 | 800000 | 05 |

4. Review the Software License Agreement, and then click **Continue**

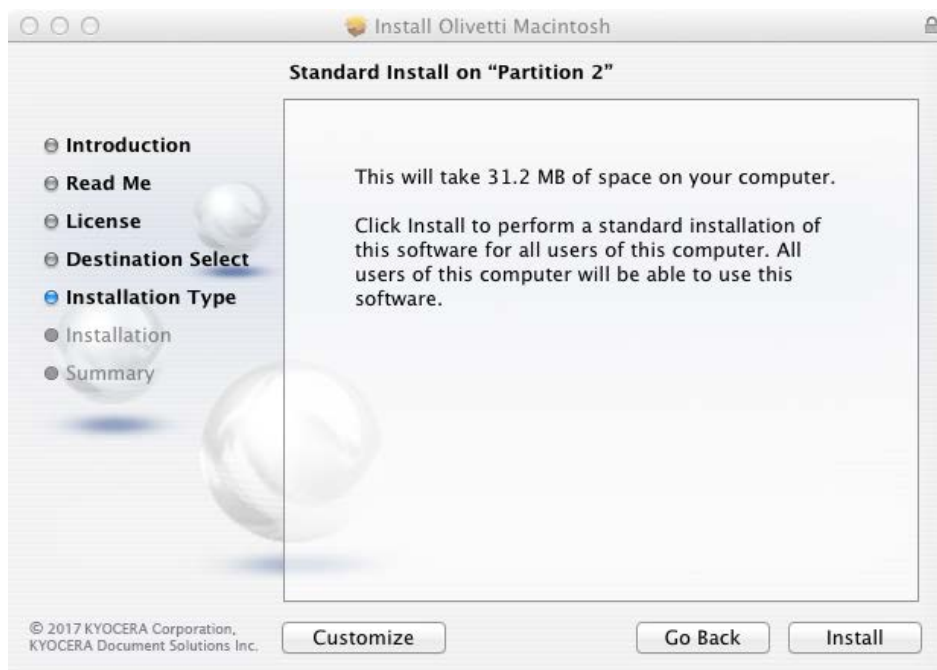


5. Click **Agree** to accept the terms of the license agreement.

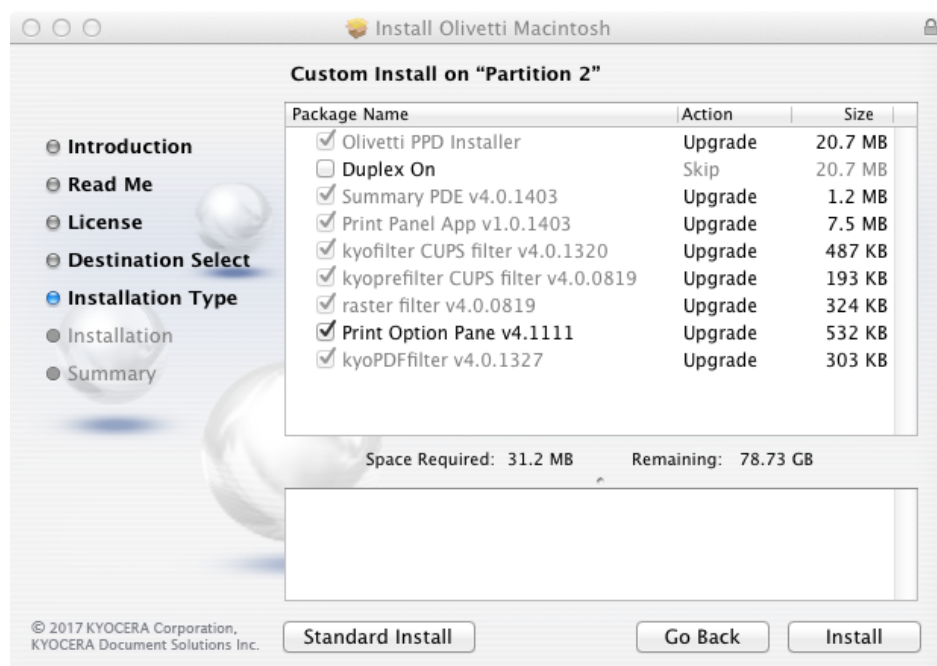


| | | |
|-------------|--------------------------------|-----|
| data / date | codice - progr./ code - number | TIB |
| 12/03/18 | 800000 05 | |

6. Click **Install** and enter the admin password to complete the standard installation. Alternatively, you can select **Customize** to perform a custom installation. For custom installation, select the **Print Option Pane** checkbox to install the Print Option Pane.



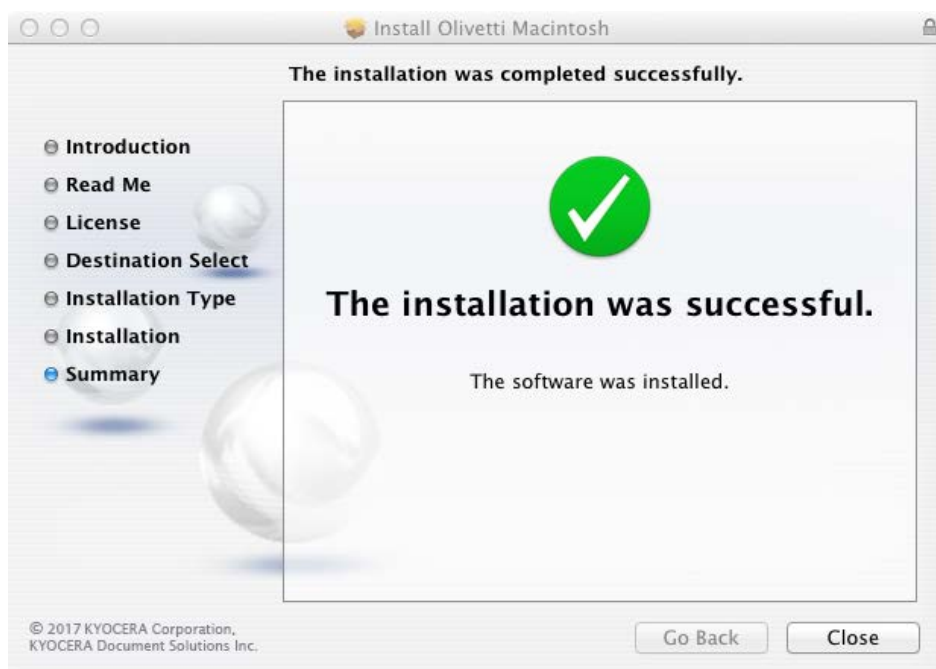
Standard Installation Page



Custom Installation Page

| data / date | codice - progr./ code - number | | TIB |
|-------------|--------------------------------|----|-----|
| 12/03/18 | 800000 | 05 | |

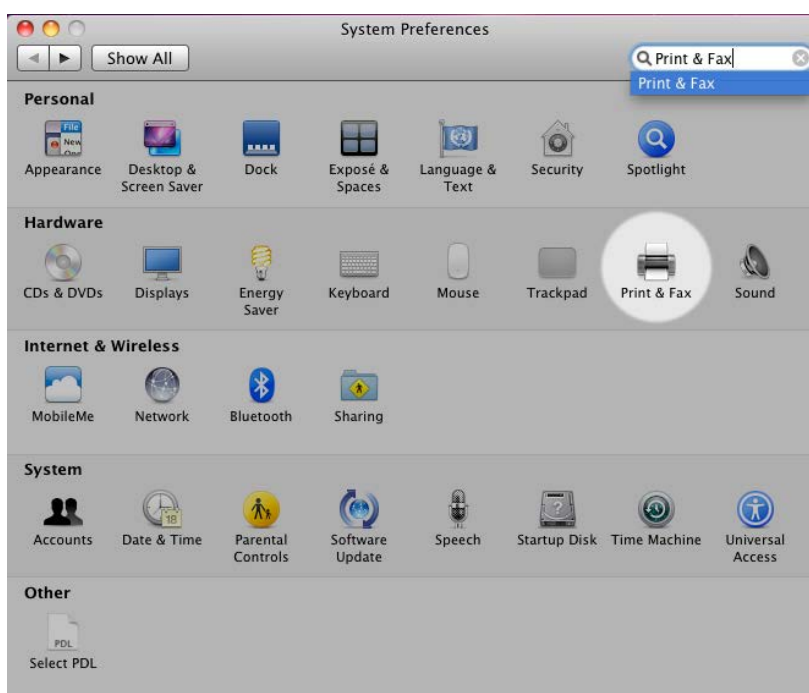
7. Click **Close** to exit when the installation is complete.



Adding Printers

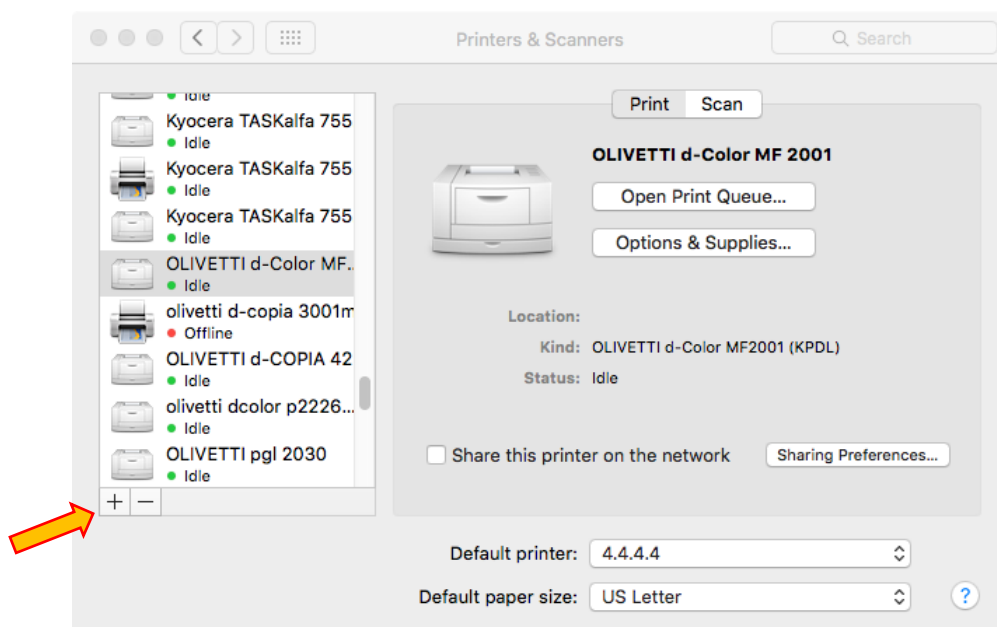
After you install the driver, you can add the printers to be used on the system.

1. Open **System Preferences** and click **Print & Fax** (this may also be called *Print & Scan* or *Printers & Scanners*, depending on the Mac OS X version you are using).



| data / date | codice - progr./ code - number | TIB |
|-------------|--------------------------------|-----|
| 12/03/18 | 800000 | 05 |

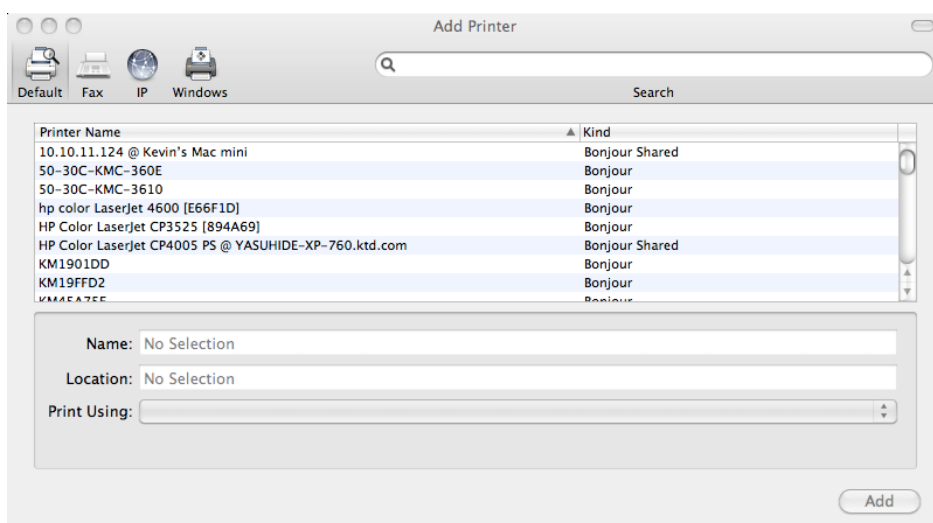
- In the **Print & Fax** dialog, you can click the “+” icon at the bottom of the Printers list to open the **Add Printer** dialog (this may also be called *Add*, depending on the Mac OS X version you are using).



To add a printer, you must first choose a connection type—Bonjour, IP Printer or Windows.

If you choose the Default connection type, Printer Setup Utility displays a list of all available printers with Bonjour support. When you select a printer to add to the Printers list, Printer Setup Utility retrieves the selected printer's address, icon, and model information. Printer Setup Utility then uses this information to create a new printer queue, and then adds the printer to the list when you click Add.

Note: On Mac OS 10.10 and later, **Secure Airprint** may be selected by default.



| data / date | codice - progr./ code - number | | TIB |
|-------------|--------------------------------|----|-----|
| 12/03/18 | 800000 | 05 | |

For better printing support, it is recommended to use Line Printer Daemon (LPD) for the protocol. To add an LPR printer that uses IP, enter the printer's DNS host name or IP address and then select the appropriate model from the Print Using menu. The matching PPD for the printer is automatically selected by the OS.

The screenshot shows the 'Add Printer' window in macOS. The window has a title bar with standard macOS window controls and a search bar. Below the title bar are four tabs: 'Default', 'Fax', 'IP', and 'Windows'. The 'IP' tab is selected. The main area of the window contains several fields and dropdown menus. The 'Protocol' dropdown is set to 'Line Printer Daemon - LPD'. Below it is the 'Address' field, which is empty and has a placeholder text 'Enter host name or IP address.'. Below the 'Address' field is the 'Queue' field, which is also empty and has a placeholder text 'Leave blank for default queue.'. Below these fields are three more fields: 'Name' (set to 'No Selection'), 'Location' (set to 'No Selection'), and 'Print Using' (an empty dropdown menu). At the bottom right of the window is an 'Add' button.